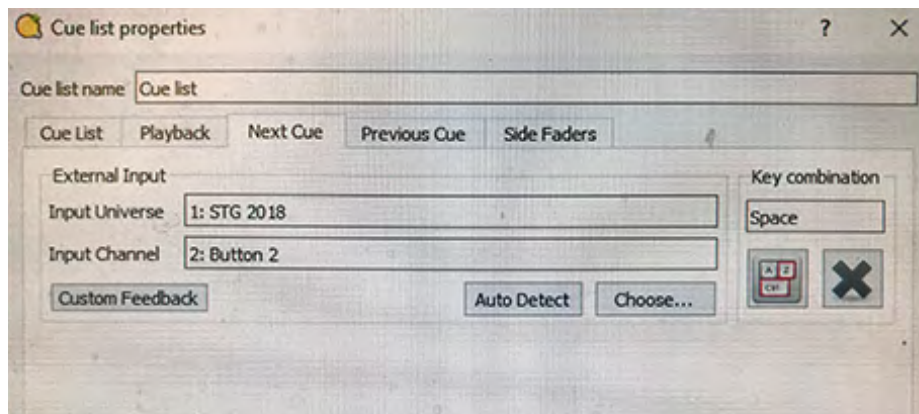
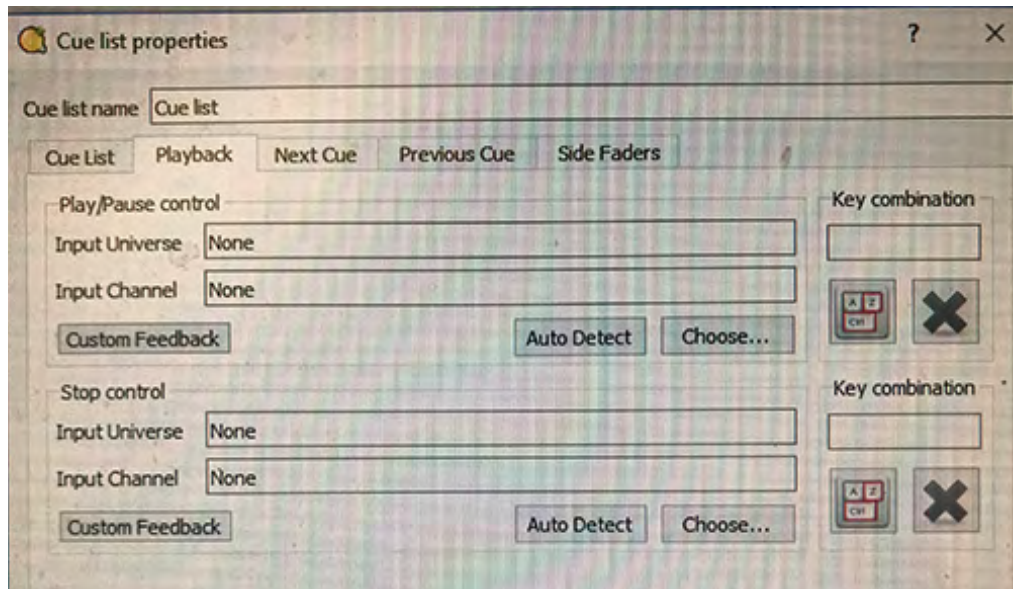
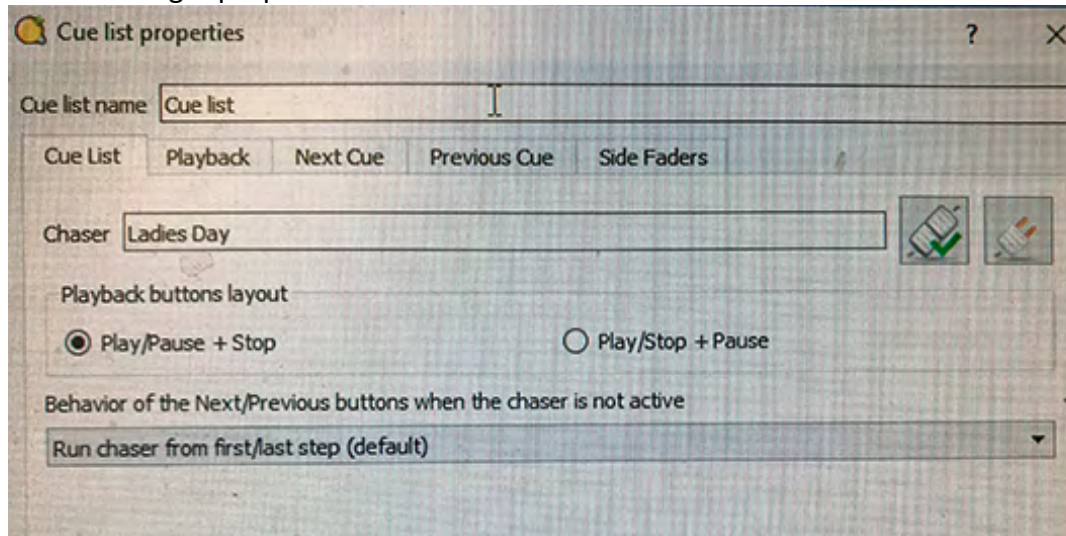
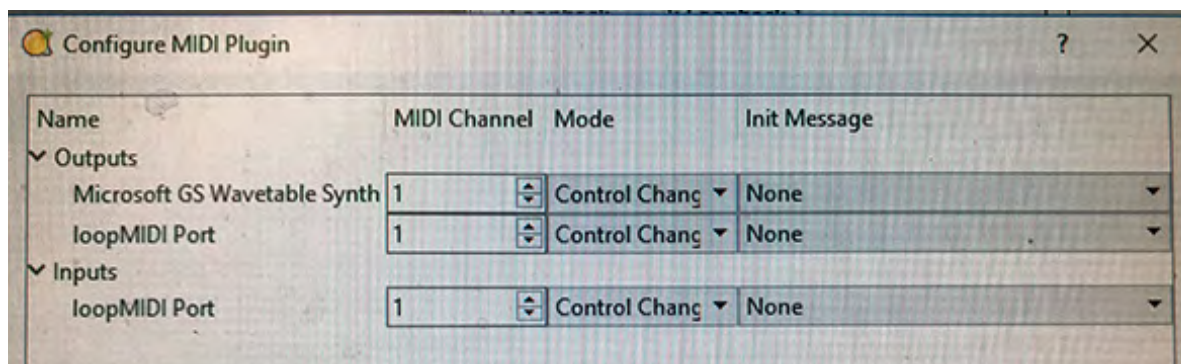
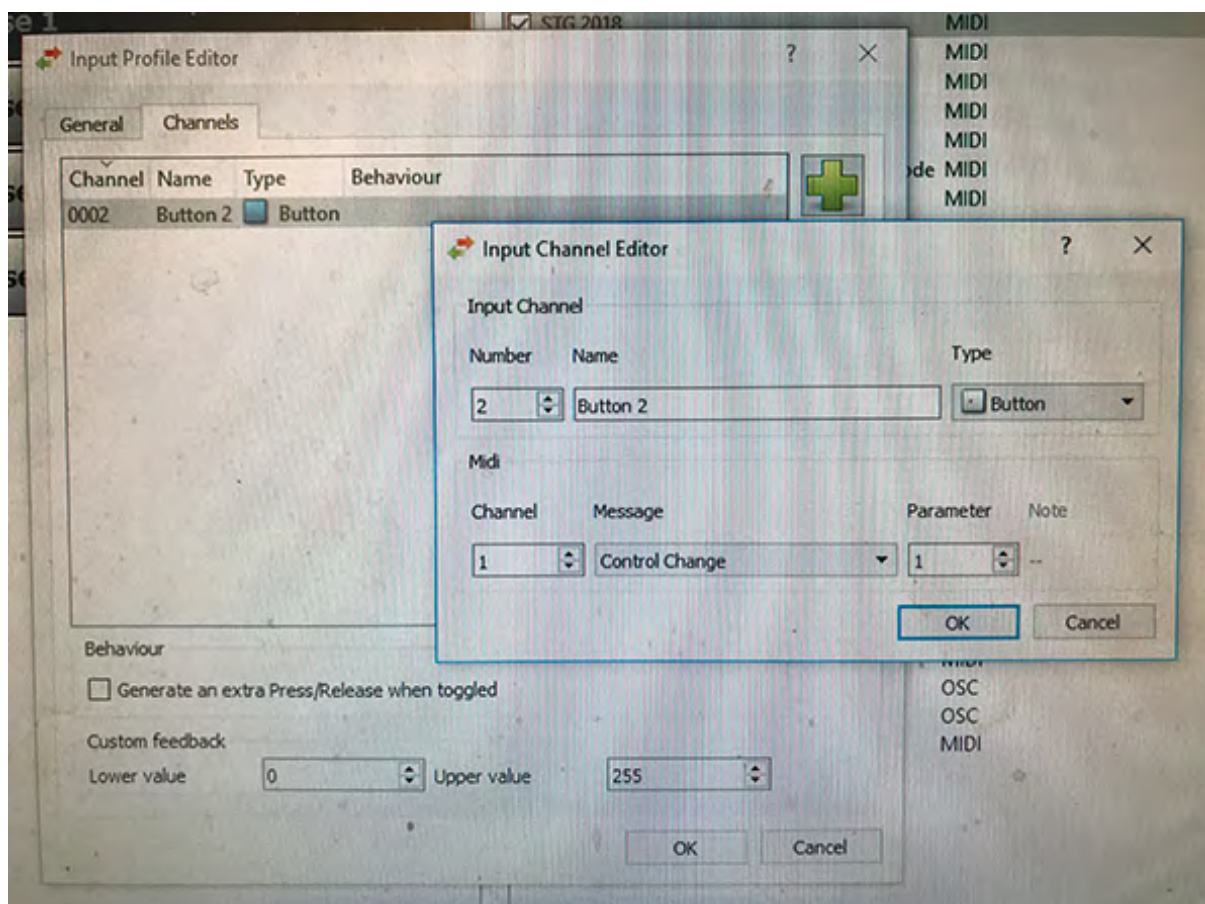
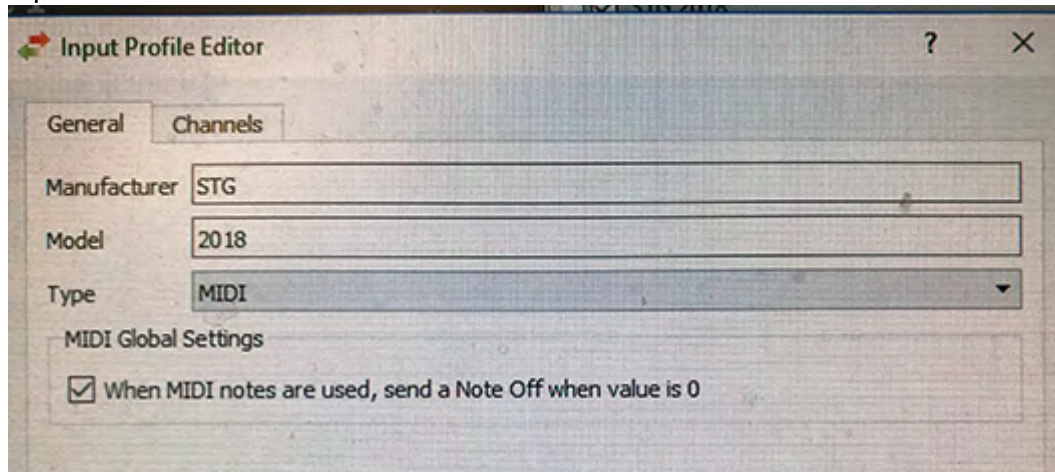


Current setup – QLC+ v4.12 | SCS v11 | LoopMidi | Windows 10 Professional

Cue List Widget properties in QLC+ 4.12

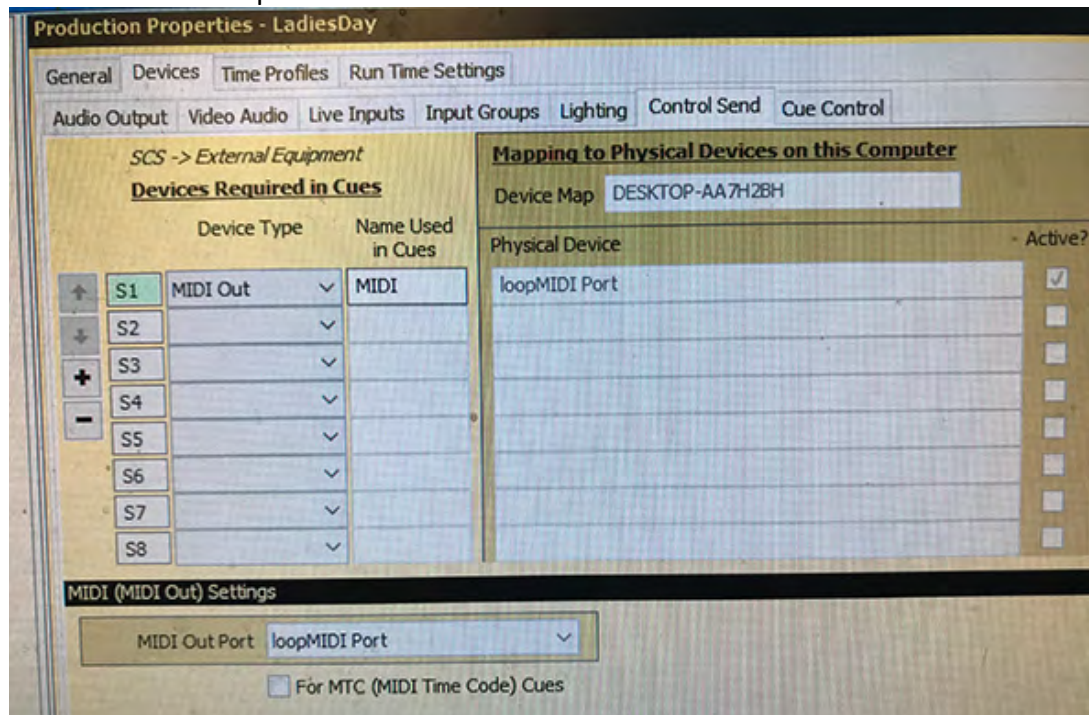


## Input Profile in QLC Universe

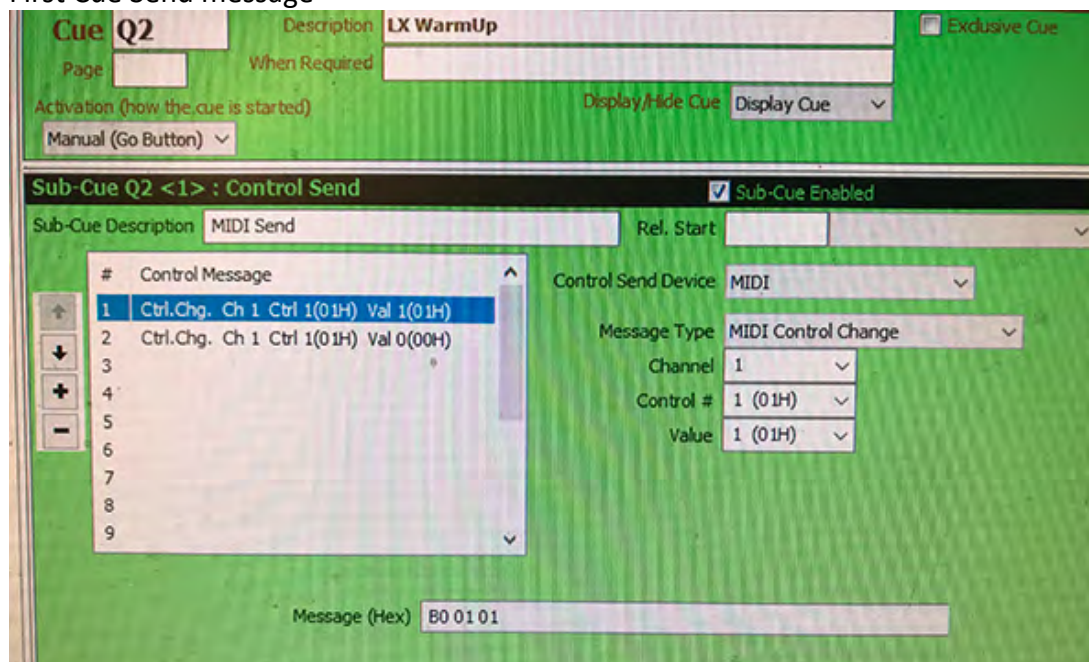




## SCS Midi Send setup



## First Cue Send message



## Second Cue Send Message

**Cue Q2** Description **LX WarmUp** ☒ Cue Enabled ☐ Exclusive Cue

Page:  When Required:

Activation (how the cue is started)  Display/Hide Cue: **Display Cue**

Manual (Go Button)

---

**Sub-Cue Q2 <1> : Control Send** ☒ Sub-Cue Enabled

Sub-Cue Description: **MIDI Send** Rel. Start:

#	Control Message
1	Ctrl.Chg. Ch 1 Ctrl 1(01H) Val 1(01H)
2	Ctrl.Chg. Ch 1 Ctrl 1(01H) Val 0(00H)
3	
4	
5	
6	
7	
8	
9	

Control Send Device: **MIDI**

Message Type: **MIDI Control Change**

Channel: **1**

Control #: **1 (01H)**

Value: **0 (00H)**

Message (Hex): **B0 01 00**